

DEF Antibody (N-term)
Affinity Purified Rabbit Polyclonal Antibody (Pab)
Catalog # AP11810a

Specification

DEF Antibody (N-term) - Product Information

Application	IF, IHC-P, WB, FC,E
Primary Accession	Q68CQ4
Other Accession	Q5M9G7 , Q8BTT6 , NP_055203.4
Reactivity	Human, Mouse, Hamster
Predicted	Rat
Host	Rabbit
Clonality	Polyclonal
Isotype	Rabbit IgG
Antigen Region	2-30

DEF Antibody (N-term) - Additional Information

Gene ID 27042

Other Names

Digestive organ expansion factor homolog, DEXF, C1orf107, DEF

Target/Specificity

This DEF antibody is generated from rabbits immunized with a KLH conjugated synthetic peptide between 2-30 amino acids from the N-terminal region of human DEF.

Dilution

IF~~1:10~50
IHC-P~~1:10~50
WB~~1:2000
FC~~1:25
E~~Use at an assay dependent concentration.

Format

Purified polyclonal antibody supplied in PBS with 0.09% (W/V) sodium azide. This antibody is purified through a protein A column, followed by peptide affinity purification.

Storage

Maintain refrigerated at 2-8°C for up to 2 weeks. For long term storage store at -20°C in small aliquots to prevent freeze-thaw cycles.

Precautions

DEF Antibody (N-term) is for research use only and not for use in diagnostic or therapeutic procedures.

DEF Antibody (N-term) - Protein Information

Name UTP25 ([HGNC:28440](#))

Function Component of the ribosomal small subunit processome for the biogenesis of ribosomes, functions in pre-ribosomal RNA (pre-rRNA) processing (By similarity). Essential for embryonic development in part through the regulation of p53 pathway. Controls the expansion growth of digestive organs and liver (PubMed:[23357851](#), PubMed:[25007945](#), PubMed:[27657329](#)). Also involved in the sympathetic neuronal development (By similarity). Mediates, with CAPN3, the proteasome-independent degradation of p53/TP53 (PubMed:[23357851](#), PubMed:[27657329](#)).

Cellular Location

Nucleus, nucleolus

Tissue Location

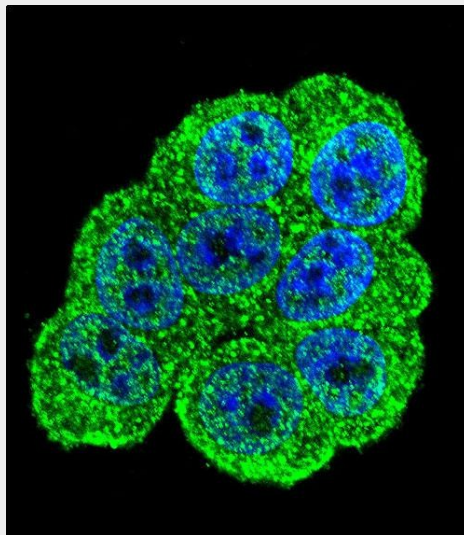
Expressed in colon..

DEF Antibody (N-term) - Protocols

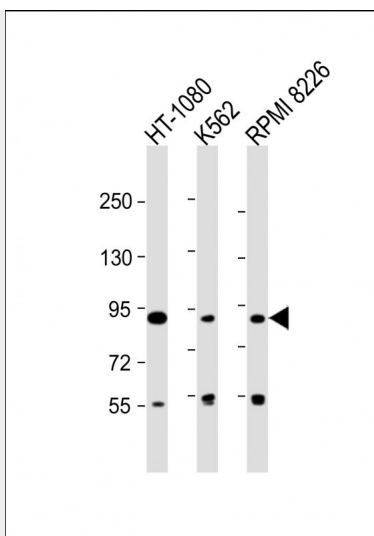
Provided below are standard protocols that you may find useful for product applications.

- [Western Blot](#)
- [Blocking Peptides](#)
- [Dot Blot](#)
- [Immunohistochemistry](#)
- [Immunofluorescence](#)
- [Immunoprecipitation](#)
- [Flow Cytometry](#)
- [Cell Culture](#)

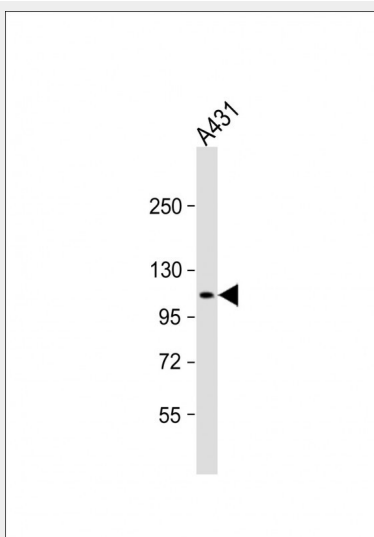
DEF Antibody (N-term) - Images



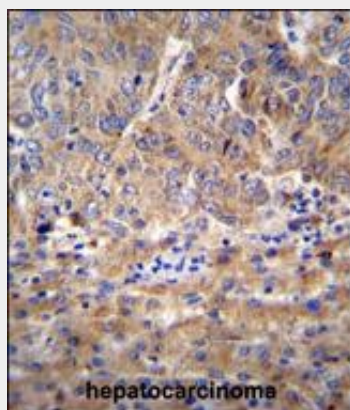
Confocal immunofluorescent analysis of DEF Antibody (N-term)(Cat#AP11810a) with HeLa cell followed by Alexa Fluor 488-conjugated goat anti-rabbit IgG (green). DAPI was used to stain the cell nuclear (blue).



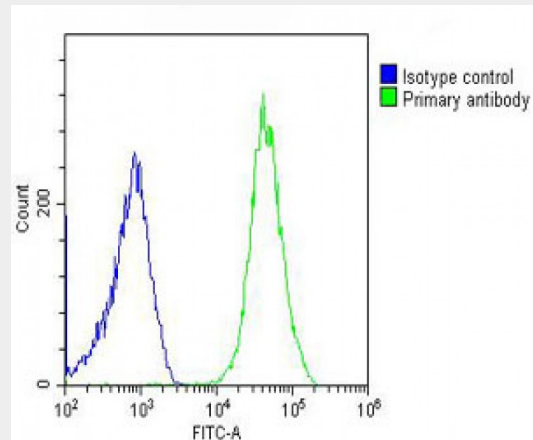
All lanes : Anti-DEF Antibody (N-term) at 1:2000 dilution Lane 1: HT-1080 whole cell lysate Lane 2: K562 whole cell lysate Lane 3: RPMI 8226 whole cell lysate Lysates/proteins at 20 µg per lane. Secondary Goat Anti-Rabbit IgG, (H+L), Peroxidase conjugated at 1/10000 dilution. Predicted band size : 87 kDa Blocking/Dilution buffer: 5% NFDM/TBST.



Anti-DEF Antibody (N-term) at 1:2000 dilution + A431 whole cell lysate Lysates/proteins at 20 µg per lane. Secondary Goat Anti-Rabbit IgG, (H+L), Peroxidase conjugated at 1/10000 dilution. Predicted band size : 87 kDa Blocking/Dilution buffer: 5% NFDM/TBST.



DEF Antibody (N-term) (Cat. #AP11810a) immunohistochemistry analysis in formalin fixed and paraffin embedded human hepatocarcinoma followed by peroxidase conjugation of the secondary antibody and DAB staining. This data demonstrates the use of DEF Antibody (N-term) for immunohistochemistry. Clinical relevance has not been evaluated.



Overlay histogram showing U-2OS cells stained with AP11810a (green line). The cells were fixed with 2% paraformaldehyde (10 min) and then permeabilized with 90% methanol for 10 min. The cells were then incubated in 2% bovine serum albumin to block non-specific protein-protein interactions followed by the antibody (AP11810a, 1:25 dilution) for 60 min at 37°C. The secondary antibody used was Goat-Anti-Rabbit IgG, DyLight® 488 Conjugated Highly Cross-Adsorbed (OH191631) at 1/200 dilution for 40 min at 37°C. Isotype control antibody (blue line) was rabbit IgG (1 µg/1x10⁶ cells) used under the same conditions. Acquisition of >10,000 events was performed.

DEF Antibody (N-term) - Background

Regulates the p53 pathway to control the expansion growth of digestive organs (By similarity).

DEF Antibody (N-term) - References

Birnbaum, S., et al. Nat. Genet. 41(4):473-477(2009)
Chen, J., et al. Genes Dev. 19(23):2900-2911(2005)